

F-TYPE

QUICK START GUIDE

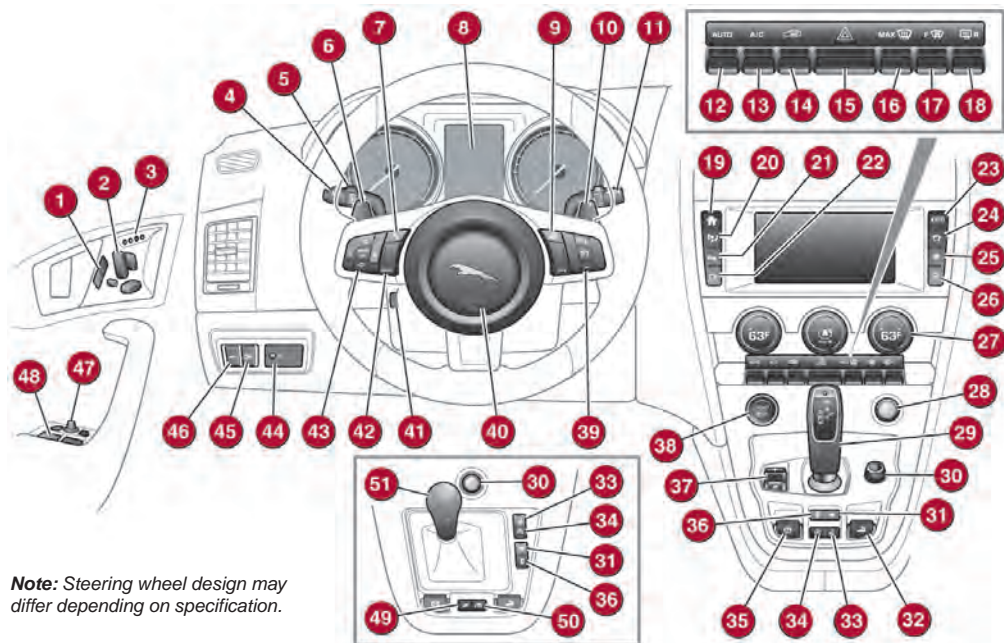
CONTENTS

Driver controls	2
Vehicle access	3
Comfort adjustments	4
Starting and driving	5
Driving aids	8
Heating and ventilation	10
Media	11
Navigation	14
Phone	15
Filling station information	16



Some of the features described may not be fitted to your vehicle.

DRIVER CONTROLS



Note: Steering wheel design may differ depending on specification.

1. Central locking/unlocking.
2. Seat adjustment.
3. Driving position memory.
4. Trip computer.
5. Indicators and headlamp control.
6. Gearshift down.
7. Phone.
8. Instrument panel, Message centre and warning lamps.
9. Heated steering wheel.
10. Gearshift up.
11. Wiper/washers.
12. Climate control AUTO mode.
13. Air conditioning on/off.
14. Climate control recirculation.
15. Hazard warning lamps on/off.
16. Windscreen maximum defrost.
17. Heated front screen.
18. Heated rear screen.
19. Home menu.
20. Climate menu.
21. Touch screen General Settings or Parking aids.
22. Touch screen on/off or Rear camera.
23. Media mode selection.
24. Media menu.
25. Phone menu.
26. Navigation menu.
27. Climate control.
28. Power socket.
29. Auto gearbox selector.
30. Media system on/off and volume control.
31. Active exhaust.
32. Convertible roof switch.
33. Deployable rear spoiler switch.
34. Intelligent stop/start.
35. Electric parking brake.
36. Stability control.
37. Driving modes.
38. START/STOP.
39. Cruise control or Automatic speed limiter.
40. Horn.
41. Steering wheel adjuster.
42. Media mode selection.
43. Media and phone controls.
44. Instrument illumination.
45. Fog lamps on/off.
46. Luggage compartment/tailgate release.
47. Exterior mirror controls.
48. Window controls.
49. Dynamic driving mode.
50. Rain/Ice/Snow driving mode.
51. Manual gearbox selector.

VEHICLE ACCESS

Smart key



Press once to lock the vehicle and arm only the exterior alarm. To also close any open windows, press and hold for 3 seconds (Global closing).

Press twice to Double lock the vehicle and fully arm the alarm system. All interior door locks are disabled.



Multi-point entry - press once to disarm the alarm, and unlock all of the doors and the luggage compartment.

Single-point entry - press once to disarm the alarm and unlock the driver's door. A second press unlocks the passenger door and the luggage compartment.

Press and hold to also open the windows (Global opening).

With either method, the door handles are presented for opening. Pull to open the door.

To change between entry modes, with the vehicle unlocked, press the lock and unlock buttons simultaneously for 3 seconds. The hazard warning lamps flash twice to confirm the change.



Press once to switch the headlamps on for up to 120 seconds. Press again to switch off.



Press to open only the luggage compartment/tailgate. The rest of the security system remains active.



Press and hold for 3 seconds to activate/cancel the panic alarm.

Smart key not found

If the Smart key is not detected and the message **Smart Key Not Found** is displayed, hold it in the indicated position. Start the engine as normal. The Smart key can now be removed.



Keyless entry and locking

The door handles operate only while the Smart key is within 1m of the vehicle.

Single locking - press the rear of the door handle until it is flush with the door. The doors and luggage compartment lock and the exterior alarm is activated. The doors can still be unlocked from inside the vehicle.

Double locking - within 3 seconds of Single locking, press the rear of the door handle again. The interior alarm is also activated. Doors cannot be unlocked from inside the vehicle. When Double locking, the convertible roof should be up.

Smart key detection

The Smart key may not be detected if it is placed in a metal container, or if it is shielded by a device with a back-lit LCD screen, (e.g., laptop, smartphone, etc.).

Smart key detection

DO NOT leave your Smart key inside the luggage compartment. If it becomes shielded, the vehicle WILL NOT automatically unlock.

Powered tailgate

See page 2, item 46

To open:

1. With transmission **P** selected, press the external tailgate release, or
2. press the internal tailgate release.

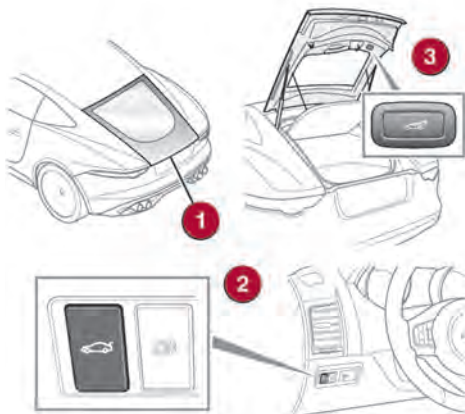
Alternatively, use the Smart key.

The powered tailgate will continue to open to the set height, unless an obstruction is detected.

To close:

3. Press and release.

If an obstruction is detected during closing, the tailgate will stop and then reverse to the fully open position. An audible warning will indicate a mislock.



COMFORT ADJUSTMENTS

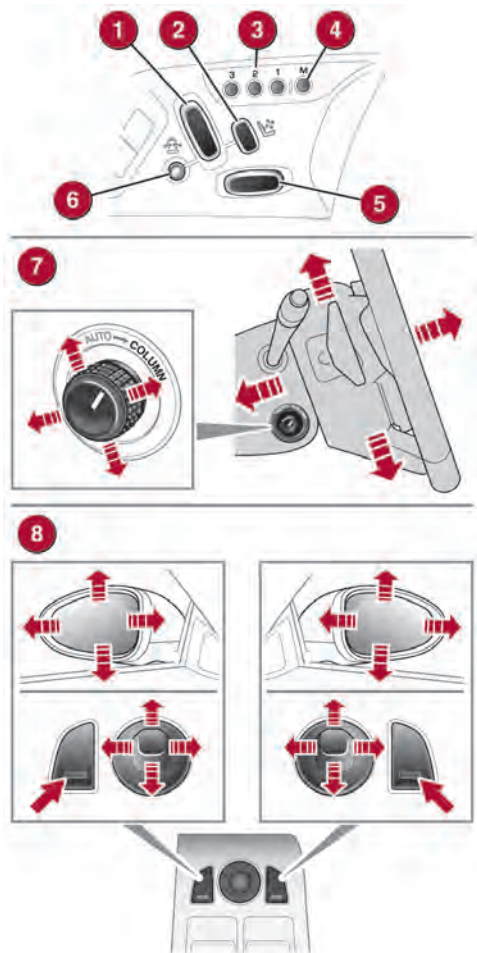
Setting the driving position

See page 2, items 2, 3, 41 and 47

Driver's seat

Set the seat position using the following controls:

1. Seatback angle.
2. Lumbar support.
3. Memory preset buttons 1, 2 and 3.
4. Memory set button.
5. Seat forwards and backwards, cushion height and cushion angle.
6. Side bolsters inflate and deflate.
7. With the vehicle stationary, adjust tilt and reach of the steering wheel to your ideal driving position.
8. Press the left or right mirror selector. Use the mirror adjuster to set the mirror positions.



Storing the driving position to memory

When the driver's seat, steering wheel and door mirrors are adjusted to the required position, the settings can be stored.

Press the memory set button 4 to activate the memory store function. The button illuminates to indicate that the memory store function is active.

Within 5 seconds, press memory button 1, 2 or 3 to store the current driving position.

A stored memory position can now be recalled with a press of the appropriate button. The driver's seat, steering wheel and mirrors move to their preset positions.

Time limit

Memory buttons must be pressed within 5 seconds of pressing the memory set button, otherwise, the memory store function cancels.

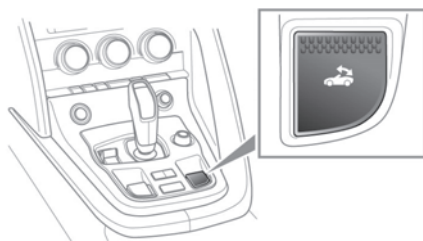
Convertible roof

See page 2, item 32

To operate the convertible roof, the ignition must be switched on and the vehicle's speed must be below 50 km/h (30 mph).

1. To open the roof, press and hold down the front of the switch.
2. An audible warning sounds, the windows open and the roof starts to move. When the roof is fully open, the warning sounds again and a message is displayed in the Message centre.
3. Release the switch.

Closing is the reverse of this procedure. Pull up the front of the switch until the roof is fully closed and latched.



STARTING AND DRIVING

Engine start/stop

See page 2, item 38

Ignition on

- With the Smart key inside the vehicle, press the **START/STOP** button to switch on the ignition.

Engine start

- The transmission must be in the **P** or **N** position.
- Automatic transmission: Press the brake pedal firmly.
Manual transmission: Press the clutch pedal firmly.
- Press and release the **START/STOP** button to start the engine.

Engine stop

- With transmission **P** or **N** selected and the Electric parking brake applied, press to stop the engine and switch off the ignition.

Smart key use

The engine will continue to run, even if the Smart key is removed from the vehicle. However, if the engine is stopped, it cannot be restarted until the Smart key is returned to the vehicle.

Rolling start

If the engine is switched off while the vehicle is moving, it can be restarted after 2 seconds have elapsed. Select transmission **N** and then press the **START/STOP** button.

Automatic transmission

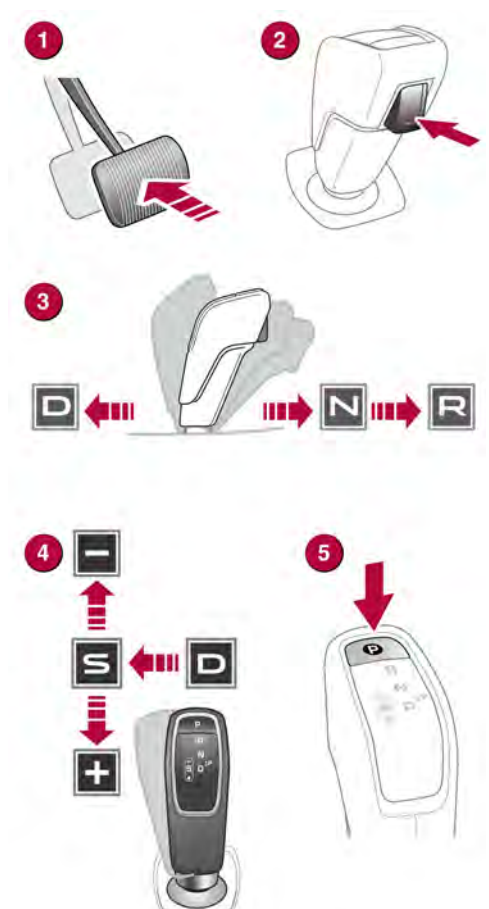
See page 2, item 29

- Press the brake pedal before and while the selector is moved from the **P** position.
- The selector release button must be pressed when moving from **P** or **N**.
- Move the selector backwards to **D** or forwards to **N**, or forwards again to **R**. An LED on top of the selector will illuminate to indicate the current gear selection. The Message centre also indicates the current gear selection.
- To select **S** (Sport mode) when in **D**, move the selector to the left. Pull the selector backwards for up-shifts and push it forwards for down-shifts. To return to fully automatic mode, move the selector back to **D**.
- To select Park, simply press the **P** switch on top of the selector. The vehicle must be stationary when **P** is selected.

If the engine is switched off with any other gear still selected, the transmission returns to the **P** position.

Automatic return to the P position

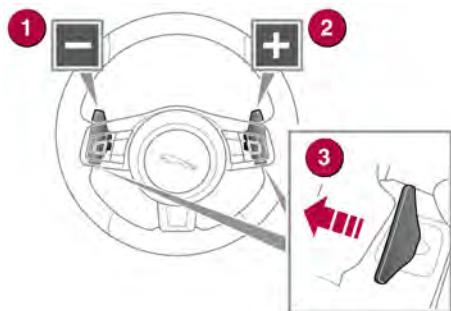
If the engine is switched off with **N** selected, automatic return to the **P** position is delayed for 10 minutes. This allows enough time for the vehicle to be conveyed through an automatic car wash. **DO NOT** use this feature to enable towing of the vehicle. Refer to **Vehicle recovery** in the Owner's Handbook.



STARTING AND DRIVING

Gear shift paddles

See page 2, items 6 and 10



The gear shift paddles can be used while in transmission **D** or **S**.

1. To shift down a gear, briefly pull the left paddle.
2. To shift up a gear, briefly pull the right paddle.
3. To exit manual mode and return to the previously selected automatic mode, pull and hold the right paddle for 1 second.

While transmission **D** is selected, if use of the paddles is not maintained, gear selection will revert to fully automatic mode. With transmission **S** selected, permanent manual mode is initiated if the paddles are used. To return to fully automatic mode, move the gear selector back to transmission **D**.

When Dynamic mode is selected while in transmission **S**, up-shifts are fully controlled by the driver. The transmission will not automatically change up to the next gear, even if the engine's rev limit is reached.

A gear position indicator, in the Message centre, glows amber when an up-shift is required.

Electric parking brake (EPB)

See page 2, item 35

Applying

- With the vehicle stationary, lift up the EPB switch and then release it. A red warning lamp in the Instrument panel illuminates.

Releasing

- With the ignition on, apply the brake pedal and press down on the EPB switch.
- If the vehicle is stationary with the EPB applied and with either transmission **D** or **R** selected, pressing the accelerator automatically releases the EPB.

Auto headlamps and High beam assist

See page 2, item 5

1. When the lighting control's **AUTO** position is selected, the side lamps and headlamps switch on automatically as ambient light falls below a preset level.

With the lighting control in the low beam position, High beam assist activates automatically in the absence of other vehicle lights ahead. The vehicle's speed must be above 40 km/h (25 mph).

To over-ride High beam assist and select low beam, pull the lighting control backwards to the flash position, and release. To reinstate High beam assist, push the lighting control forwards to the high beam position, then back to the low beam position.

High beam assist can be enabled/disabled via the **Vehicle Settings** option in the **Instrument panel** menu.



Exit delay

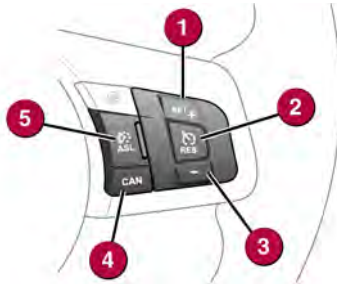
2. 3. 4. The headlamps can temporarily illuminate the way ahead when exiting the vehicle at night. Rotate the control for delay periods of 30, 60, or 120 seconds.

STARTING AND DRIVING

Cruise control and Automatic speed limiter (ASL)

See page 2, item 39

Setting the Cruise control speed



1. Accelerate to the desired speed, then press to set and maintain the speed. Can also be used to increase speed while Cruise control is operating.
2. Resumes the set speed after Cruise control has been suspended.
3. Press to decrease the set speed.
4. Suspends Cruise control but retains the current set speed in the memory.
5. Press to switch between Cruise control and ASL.

Setting an ASL speed limit

With ASL selected, a maximum speed can be set while the vehicle is stationary or on the move. The engine responds normally up to the set speed, but further accelerator pressure will not allow the ASL setting to be exceeded. Accelerator kickdown use will over-ride the ASL setting, allowing a higher speed to be reached. When kickdown is used, ASL is suspended.

1. With ASL selected, press to set a maximum speed. A higher maximum speed can be set at any time. The set speed is displayed in the Message centre.
2. Resumes ASL assistance after a suspension, if the vehicle's speed is less than the set speed. Vehicle speed must be above 30 km/h (18 mph).
3. Press to decrease the speed limit.
4. Suspends ASL assistance.
5. Press to switch between ASL and Cruise control.

Cruise control over-ride

Cruise control disengages when the brakes are applied or when the vehicle's speed is below 30 km/h (18 mph). Cruise control will cancel if the accelerator is used for more than 5 minutes.

Intelligent stop/start

See page 2, item 34

Intelligent stop/start automatically activates when the ignition is switched on. If the vehicle is stopped and the brake pedal is applied, the engine switches off (unless it is required to support other vehicle systems).

Note: The engine will not stop automatically if a gear shift paddle has been used to select a gear.

When the brake pedal is released and a drive gear is selected, the engine restarts. A green stop/start lamp illuminates in the Instrument panel while the engine is switched off by Intelligent stop/start.

Press the Intelligent stop/start switch to deactivate the system. The message centre will briefly display the message, **AUTO STOP-START OFF**.

Note: The engine restarts automatically if the switch is pressed while an automatic engine stop is in progress.

When the ignition is switched off and on again, Intelligent stop/start is reinstated.

Deployable rear spoiler (DRS)

See page 2, item 33

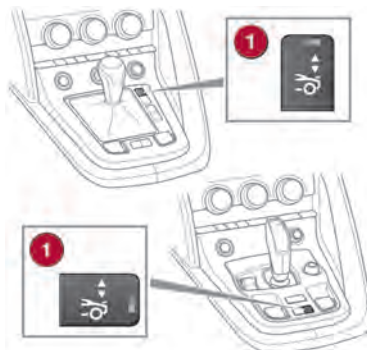
The DRS will raise automatically when the vehicle reaches a predetermined speed:

Convertible - 96 km/h (60 mph) and will retract when the speed drops below 64 km/h (40 mph).

Coupe - 113 km/h (70 mph) and will retract when the speed drops below 80 km/h (50 mph).

Manual operation

1. Press to raise the DRS at vehicle speeds of below 96 km/h (60 mph) for the Convertible and 113 km/h (70 mph) for the Coupe.
2. Press again to return to automatic mode.



Note: Coupe switch graphic is similar.

Driving modes

See page 2, items 37, 49 and 50

Manual and automatic transmission

Rain/Ice/Snow mode and Dynamic mode, allow the driver to more finely tune the vehicle's driving characteristics to suit the prevailing conditions. While a mode is selected, the relevant switch lamp is illuminated.



1. **Dynamic mode:** Coordinates the vehicle's systems to deliver a high performance driving experience. If transmission **S** is now used with paddle gear selection, there is no automatic gear change, even if the rev limit is reached.

NOTE: This mode remains selected for 6 hours after the engine is switched off.

2. **Rain/ice/snow mode:** Use in slippery road conditions. Moderates engine response and modifies the gear change strategy, to achieve the maximum possible traction.

NOTE: This mode remains in use until switched off.

Dynamic launch

Enhances vehicle acceleration and automatic gear changes during a launch from standstill.

1. With Dynamic mode selected, press and hold the brake pedal with the left foot.
2. Select transmission **D** or **S** and lightly press the accelerator until the Message centre displays **DYNAMIC LAUNCH READY**.
3. Release the brake pedal and then fully press the accelerator pedal. **DYNAMIC LAUNCH ACTIVE** is displayed in the Message centre and rapid acceleration commences.

Door mirror dip and Blind spot monitor (BSM)

See page 2, item 47

Passenger side mirror dip when reversing

This feature can be used to improve the passenger side lower view, while reversing. Mirror dip can be selected or deselected from the Instrument panel menu. Select the **Vehicle Settings** menu, then select the desired option from the list.

To set a dip position

1. With the Electric parking brake applied, select transmission position **R**.
2. Adjust the mirror position with the joystick control to show a view of the lower rear kerb and vehicle.

Subsequently, each time transmission **R** is selected, the set dip position will be automatically selected. The mirrors will return to their normal position when a forward gear is selected.

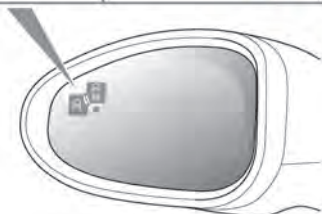
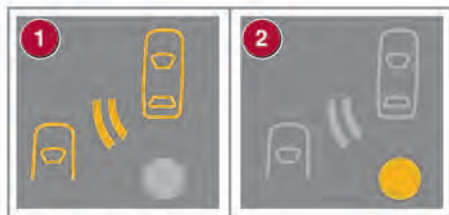
Folding mirrors

Press both buttons simultaneously to fold the mirrors inwards. Press again to unfold.

Blind spot monitor

BSM switches on automatically at vehicle speeds of above 10 km/h (6 mph) while in a forward gear. It monitors an area that extends approximately 6 m behind the rear wheels and 2.5 m to the sides.

1. Each mirror displays amber icons to warn of overtaking vehicles in adjacent lanes.
2. The amber dot remains illuminated until the vehicle's speed exceeds 10 km/h (6 mph).

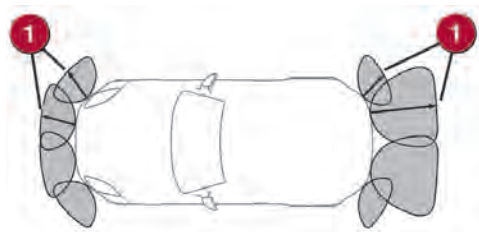


Parking aids

See page 2, item 21

When transmission **R** is selected, Parking aids sensors at the rear and front of the vehicle activate. When a forward gear is selected and the front Parking aids are required, press the Parking aids switch to the left of the Touch screen. Forward speed must be kept below 16 km/h (10 mph).

1. When a Rear camera is not fitted, the Touch screen displays a vehicle graphic and indicates the approximate distance to any object detected.



Note: Sensors may activate when water, snow, or ice are detected on their surfaces. Make sure that the sensors are cleaned regularly.

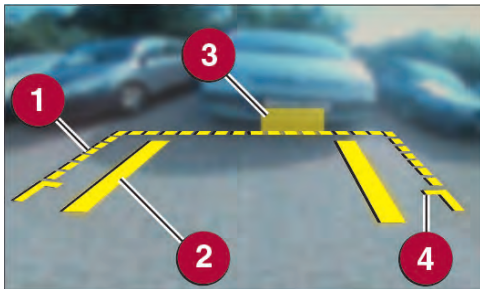
An audible alert increases in frequency as the object is approached.

The audible alert volume can be adjusted via the Touch screen. Select the **Home** menu, then **General Settings** followed by **System**. Now select **Volume settings**. Use the **+** or **-** soft keys, alongside **Parking aid**, to adjust the volume.

Rear camera

The Rear camera activates when transmission **R** is selected and has priority over the Parking aid view. The Touch screen displays guidance lines to aid reversing.

To display the Parking aid vehicle graphic instead, move the transmission to a forward gear, then back to **R**.



1. Broken line - full width of the vehicle.
2. Solid line - projected reversing path based on the current steering wheel position.
3. Parking sensor activation - shaded area indicates which rear sensors are active.
4. Access guide line - do not reverse beyond this point if luggage compartment access is required.

Valet mode

The glovebox, luggage compartment, and the Touch screen can be security locked to deny access to a parking attendant.

Selecting Valet mode

1. On the Touch screen **Home** menu, touch the **Extra features** arrow on the right side of the screen or swipe the screen from right to left.
2. Now select **Valet mode**.
3. Enter a 4 digit PIN (personally chosen). You will be requested to confirm the PIN number.
4. **Valet mode activated** is displayed.



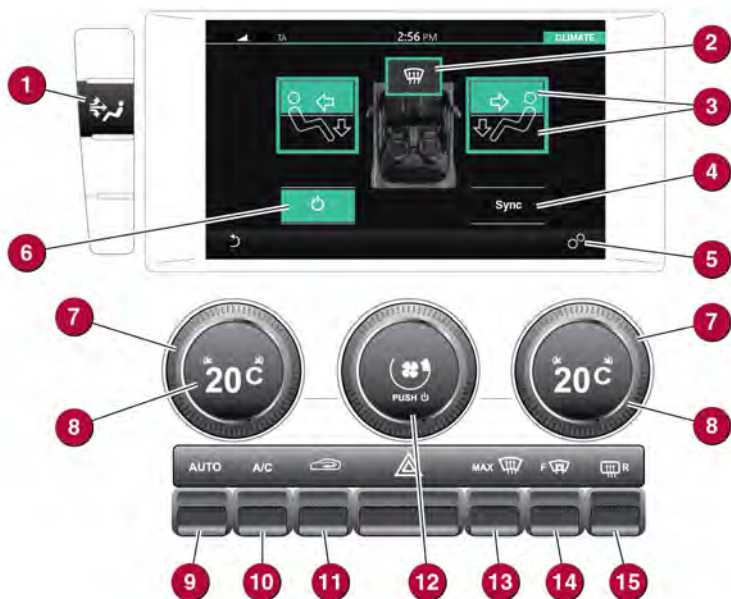
Deselecting Valet mode

1. Select **Valet mode** on the Touch screen.
2. Enter your 4 digit PIN and touch **OK**.
3. **Valet mode deactivated** is displayed, the glovebox, luggage compartment and Touch screen are unlocked.

HEATING AND VENTILATION

Climate control

See page 2, items 12 to 14, 16 to 18, 20 and 27



1. Press to access the CLIMATE screen.
 2. Air to the windscreen.
 3. Air distribution: More than one setting can be selected at the same time. Depending on the setting, the deployable centre vents may open or close.
- Note:** The centre vents will always close automatically when the Climate control system or ignition is switched off.
4. Synchronises the left and right settings.
 5. General settings menu.
 6. Climate control system on/off.
 7. Temperature controls.
 8. Press to switch the seat heating on. Rotate clockwise to select low, medium or high temperature. Rotate counter-clockwise to switch off.
 9. **AUTO:** This is the recommended operating mode. Automatically adjusts the air conditioning, blower speed, air intake and airflow distribution to maintain the selected temperature(s). The deployable centre vents will open and close as required. Helps to prevent screen misting.

10. Air conditioning (AC) on/off.
11. Recirculation: Helps to prevent fumes from entering the vehicle. Prolonged use may cause the windows to mist.
12. Blower speed: Rotate to adjust. Press to switch off the Climate control system.
13. **MAX:** Fastest method to remove frost or heavy misting from the windscreen.
14. **F:** Heated windscreen.
15. **R:** Heated rear screen.

External water deposits

The system removes moisture from the air and deposits the excess water beneath the vehicle. This is normal and is no cause for concern.

Seat heating

Seat heating operates only while the engine is running. This is to prevent the battery becoming discharged.

Media controls

See page 2, items 23, 24, 30, 42 and 43

Touch screen damage

The Touch screen requires only light touches. Excess pressure could result in damage.

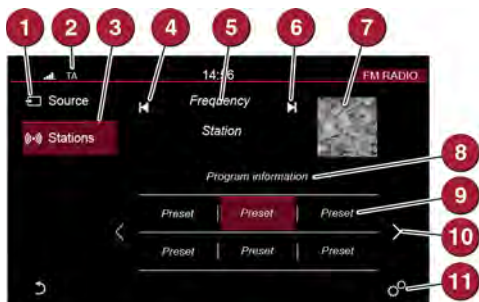


1. On/off and volume control.
2. Touch the **Media** icon to select the **Media** system, or if already in the **Media** system, touch to select the current media source menu.
3. Press **MODE** to select the media source.
4. Press to select the **Media** system, or if already in the **Media** system, press to select the current media source menu.
5. **MODE**: Press the steering wheel control repeatedly to scroll through the available sources. While a source is displayed, press and hold to scroll through sub-selections.
6. Press to increase the volume.
7. Press to decrease the volume.
8. Seek up: Short press to select the next preset or track. Press and hold to select the next radio station.
9. Seek down: Short press to select the previous preset or track. Press and hold to select the previous radio station.

Radio

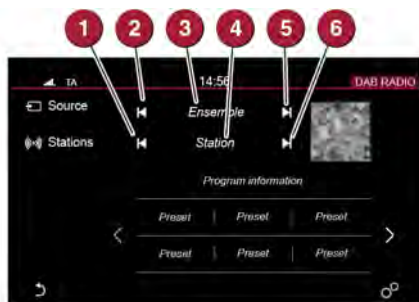
On the Touch screen **HOME** menu, touch the **Media** option. The last used media source menu is displayed. Select **FM RADIO** in the **Source** options.

1. **Source:** Touch to select the media source list.
2. Status icons: Shows the connected phone's battery level, network signal strength, and TA (if selected).
3. Touch to view and select wavebands.
4. Move down to the previous station. Briefly touch for auto-seek, longer touch for manual seek.
5. The selected radio station name and frequency.
6. Move up to the next station. Briefly touch for auto-seek, longer touch for manual seek.
7. Waveband image (if available).
8. Information from the selected station.
9. Preset soft keys: Can store 6 stations for each waveband. Touch and hold a soft key to store the current radio station.
10. Touch the arrow to scroll through the presets.
11. **General settings** menu: Select **Media**, then **Radio** and then select from the available features. Features are market dependent.



Digital audio broadcasting (DAB) radio

On the Touch screen **HOME** menu, touch the **Media** option. Select **DAB RADIO** in the **Source** options.



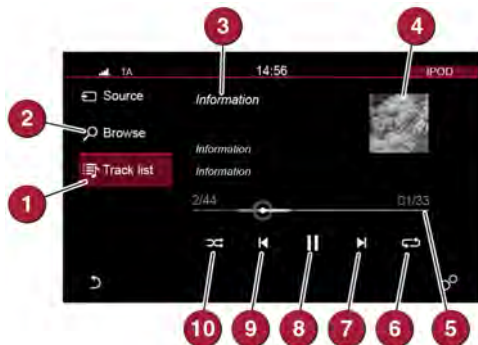
1. Seek down: Touch to auto-seek down the frequency to the next radio station.
2. Seek down: Touch to auto-seek down the frequency to the next radio ensemble.
3. The selected radio ensemble name.
4. The selected radio station name.
5. Seek up: Touch to auto-seek up the frequency to the next radio ensemble.
6. Seek up: Touch to auto-seek up the frequency to the next radio station.

Storing a DAB station on a preset soft key

Select a DAB radio station. Touch and hold a preset soft key to store the station. To subsequently listen to a stored station, touch the appropriate preset. Use the seek buttons on the steering wheel to change to the next or previous stations.

Portable media

On the Touch screen **HOME** menu, touch the **Media** option. Select a portable media in the **Source** options.



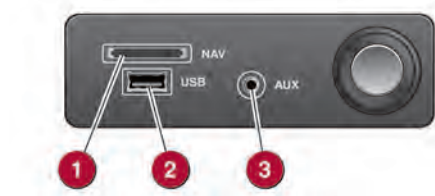
1. **Track list:** Touch to select the list of tracks from the connected device.
2. **Browse:** Touch to select the menu screen for the required music or audio source subject list for the connected device: **Playlists, Artists, Albums, Songs**, etc.
3. Information relating to the music or audio being played.

4. Image display.
 - If available, the album art for the current track being played will be displayed. The image will also appear on the **Media** soft key on the **HOME** page.
5. Progress bar: Drag the spot or touch the line to move forwards or backwards through the track.
6. Continuous play: Touch to play the current track continuously.
7. Skip/scan forwards: Touch to skip forwards to the start of the next track, or, touch and hold to scan forwards through the current track being played. Playback resumes when the soft key is released.
8. Pause/play: Touch to pause playback; touch again to resume playback.
9. Skip/scan backwards: Touch to skip back to the beginning of the current track being played, or, touch and hold to scan backwards through the current track being played. Playback resumes when the soft key is released.
10. Shuffle: Touch to play random tracks from the current MP3 folder, USB folder or iPod playlist.

Note: When connecting a **Bluetooth®** wireless technology device, use the **Touch** screen to operate and search the device. Repeat and Shuffle modes are not available for **Bluetooth** wireless technology devices.

Portable media connections

The connecting ports for portable media devices, are located inside the centre console cubby box.



1. SD card slot: Insert the supplied SD card for Navigation, Voice and various phone features, until it clicks into place.
2. USB/iPod socket.
3. 3.5 mm AUX socket.

The 3.5 mm AUX socket allows extra equipment, e.g., a personal stereo, MP3 player, hand-held navigation unit, etc., to be connected to the media system. Devices connected to the AUX socket are controlled only from the device itself.

When connecting to the USB/iPod socket, use the cable supplied with your device. iPod and USB devices can be operated from the Touch screen.

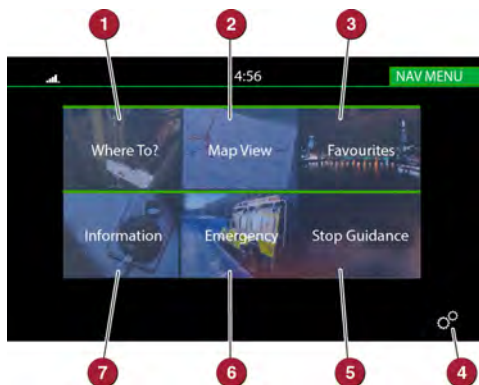
The media system will play MP3, WMA and AAC files from a memory stick, a USB controlled MP3 player or a phone.

Some MP3 players use proprietary file systems that are not supported by the vehicle's media system. MP3 players must be set to **Removable Device** or **Mass Storage Device** mode (see the manufacturer's information). Only music files added to the device while in this mode can be played via the media system.

Touch screen navigation

See page 2, item 26

To access navigation, press either the **NAV** hard key or touch the **Navigation** area on the **HOME** menu.



1. **Where To?:** Touch for setting a destination. When a destination is selected, there are four further options:
 - **Yes** to start navigation.
 - **Options** for the type of route.
 - **Avoid** to avoid a road feature.
 - **Save** to save the route to your **Favourites**.
2. **Map View:** Touch to view the map screen.
3. **Favourites:** Touch to view the list of stored destinations.
4. **Settings:** Touch to view the **General settings** or **Navigation** menu.
5. **Stop Guidance:** Touch to cancel the current route guidance.
6. **Emergency:** Touch to see a list of emergency services.
7. **Information:** Touch to display the following: **Traffic**, **Where am I**, and **Trip computer**.

Settings

When using the Navigation for the first time, personal preferences should be set. These settings are then applied whenever the Navigation system is used.

Settings include:

- Speed limit warning.
- Navigation guidance options.
- Map display mode.
- Map view.
- Orientation of map direction.
- Traffic incidents.

Map view



1. Touch to select the **NAV MENU**.
2. Touch to select the **Route** menu.
3. Touch to set a selected destination.
4. Touch to show information for a Point Of Interest (POI), or for traffic information.
5. Touch to reduce the map size.
6. Drag the indicator along the scale to enlarge or reduce the map size, or touch the line for the position required.
7. Touch to change between estimated time to destination and distance to destination.
8. Touch to enlarge the map size.
9. Touch to view the **General settings** or **Navigation** menu.
10. Next manoeuvre icon and the distance to the next manoeuvre. Touch to hear Voice guidance for the next manoeuvre.
11. Indicates the vehicle's position on the set route.
12. The route that has been set.

Bluetooth® wireless technology devices

See page 2, items 7, 25 and 43

Bluetooth Connectivity

For the latest compatibility information, go online to www.jaguar.com and search for Bluetooth.

Note: The process of pairing and connecting a phone to the vehicle will vary depending on the type of phone used.

Use the following procedure in conjunction with your phone manufacturer's instructions.

Connection must be made with the ignition switched on or with the engine running.

Pairing and connecting using a phone

1. Switch the ignition on and make sure the Touch screen is active.
2. Select **General settings**, then **Bluetooth**.
3. From the list, select **Make system discoverable**.
4. Switch on your phone or device's connection. Make sure that your phone or device is in discoverable mode, sometimes referred to as find me mode (see your phone or device's operating instructions for more information).
5. A Passkey number appears on the phone or device. If this number matches the number on the Touch screen, touch **Yes**, or press **Pair** on the phone or device.
6. Once a phone or device is paired, it appears on the connected device's list and on the **PHONE** screen.

Pairing and connecting using the Touch screen

1. Switch on your phone or device's connection. Make sure that your phone or device is in discoverable mode, sometimes referred to as find me mode (see your phone or device's operating instructions for more information).
2. Switch the ignition on and make sure the Touch screen is active.
3. Select **General settings**, then **Bluetooth**.
4. The system searches for a phone or device and, if found, the phone or device displays on the screen. If the phone or device is not found, **NO DEVICES FOUND** is displayed.
5. A Passkey number appears on the phone or device. If this number matches the number on the Touch screen, touch **Yes**.

Calls via the Touch screen

With a paired and active phone, press the **PHONE** button to the right of the Touch screen.



1. Select **Messages**, **Contacts** or **Call lists**.
2. Touch to display the keypad. Use the keypad to enter a phone number.
3. To make a call, touch the green connect icon. The icon changes to a red connected call icon. To end a call, touch the red icon.
4. Touch to search for a new, or change to another, paired phone or device.

Calls via the steering wheel controls



1. Press to increase the volume when in a call.
2. Press to answer an incoming call. Press to make or end a call.
3. Press to decrease the volume when in a call.

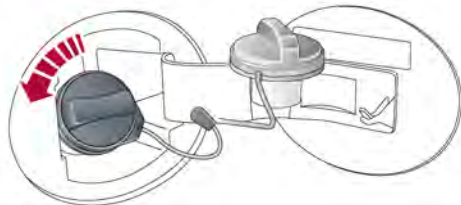
Telephone echo

If echo is experienced when using the phone, reduce the volume during the call.

FILLING STATION INFORMATION

Refuelling

The vehicle must be in an unlocked condition before the fuel filler flap can be opened. Press the fuel filler flap firmly, approximately 35 mm from the rear edge, and release. Pull the flap open. The correct fuel specification is shown on the inside of the fuel filler flap.



Twist the cap counter-clockwise to release. A hook is provided on the flap hinge to hold the cap while refuelling.

Replace the cap and turn it clockwise until the ratchet clicks. Close the fuel filler flap until it is latched in the closed position.

Fuel information

Do not use E85 fuels (85% ethanol content). Equipment necessary for the use of fuels containing more than 10% ethanol is not fitted to this vehicle. If E85 fuels are used, serious engine and fuel system damage will occur.

Fuels containing up to 10% ethanol (E5 and E10) may be used.

Avoid using fuel containing methanol. Fuel system damage and engine performance problems can occur when methanol is used.

Unleaded fuels containing up to 15% MTBE can be used.

Incorrect fuelling

No responsibility is accepted for damage caused by using incorrect fuels.

If the vehicle is filled with the wrong type of fuel:

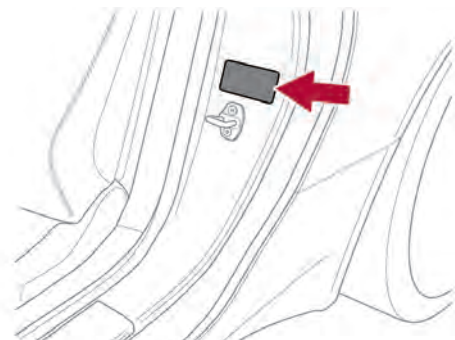
- **DO NOT start the engine!**
- **Call for qualified assistance!**

Bonnet release

The release handle is located in the left-side footwell.

Tyre pressure label location

Tyre pressures are shown on a label located in the driver's door opening.



Note: Tyre pressures must be checked and adjusted while the tyres are cold.